

[www.ip-com.com.cn](http://www.ip-com.com.cn)

# Quick Configuration Guide

IP-COM Software Controller

**IP-COM**  
World Wide Wireless

This Quick Configuration Guide walks you through installation and Quick Setup. For more information, refer to its user guide available at [www.ip-com.com.cn](http://www.ip-com.com.cn)

## System requirements

### Supported OS:

Windows 10/7

### Recommended system configurations:

Windows 10 (64-bit), 4 GB or more RAM, 50 GB or more free space in system partition.

### Minimum system configurations:

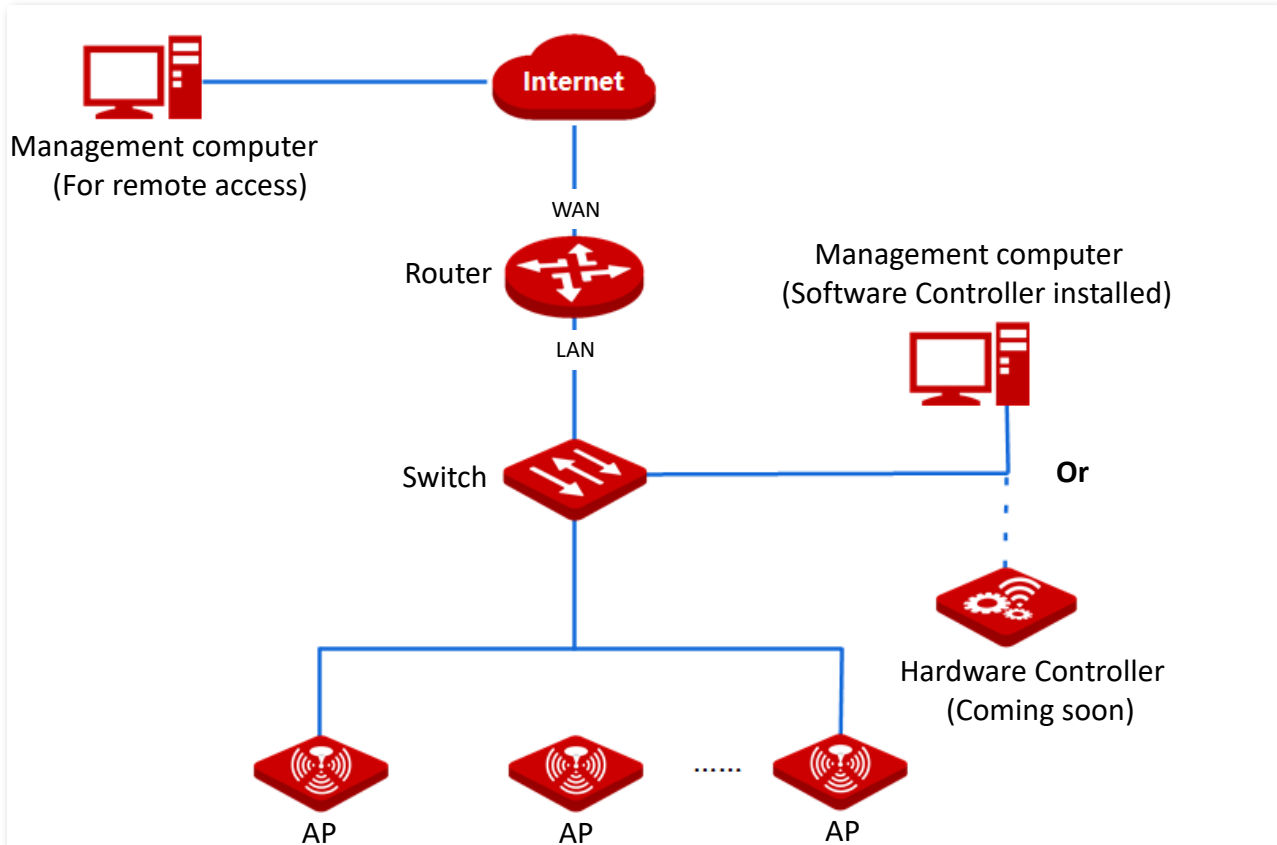
Windows 7 (32-bit), 2 GB or more RAM, 10 GB or more free space in system partition.

### Compatible web browser:

- Google Chrome: Stable version officially released within the last 2 years
- Firefox: Version 60.0 or above
- Opera: Stable version officially released within the last 2 years
- Edge: Stable version officially released within the last 1 year
- IE: IE 10 or above

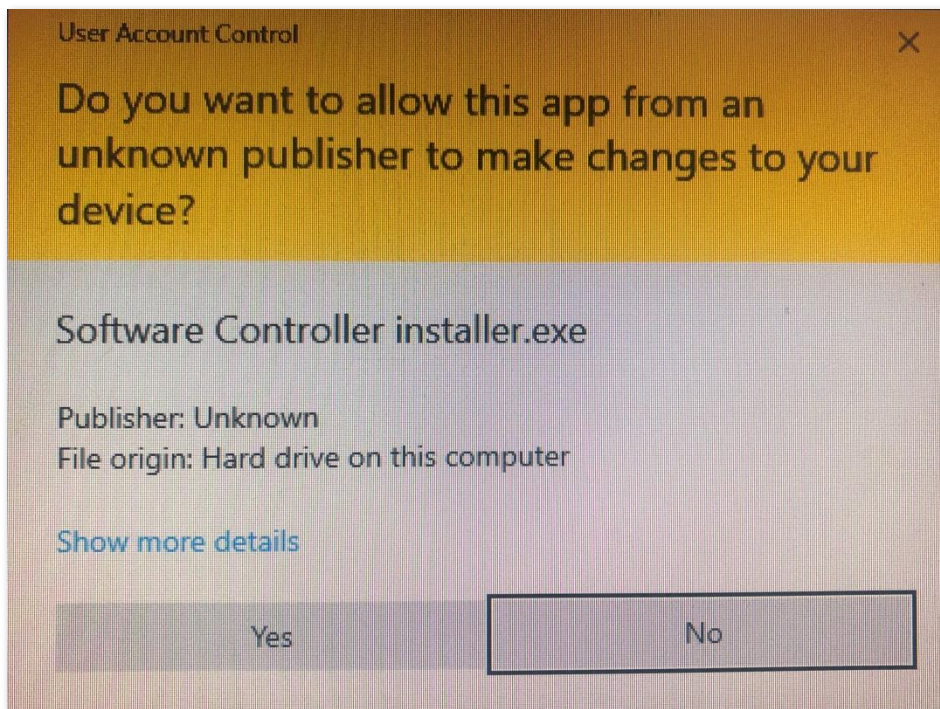
# Application scenario

The Software Controller allows you to manage your iUAP series APs using a web browser.

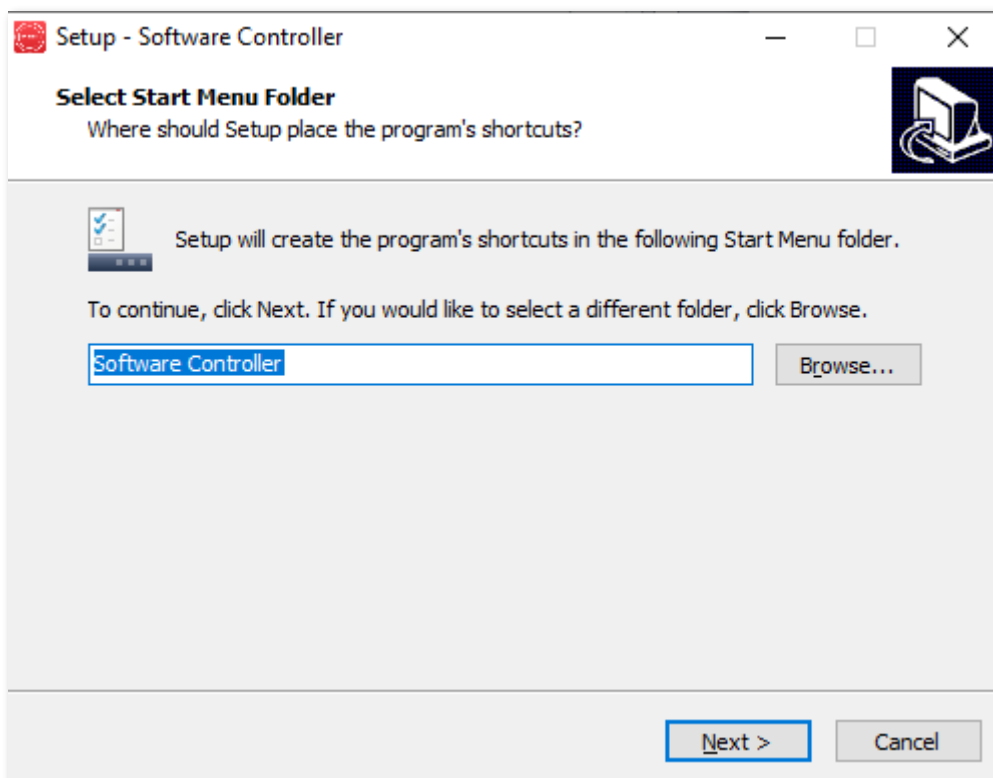


# I Install Software Controller (Example: Windows 10)

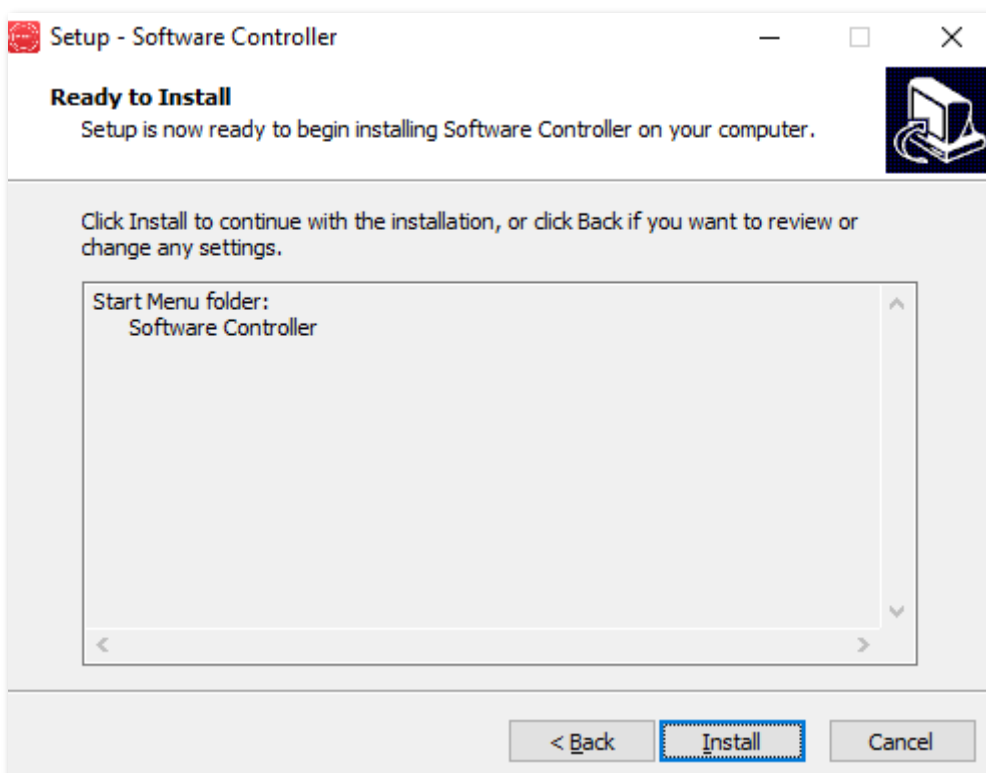
1. Download the installation package of the Software Controller at [www.ip-com.com.cn](http://www.ip-com.com.cn)
2. Double-click the **.exe** file.
3. Click **Yes** in the pop-up window.



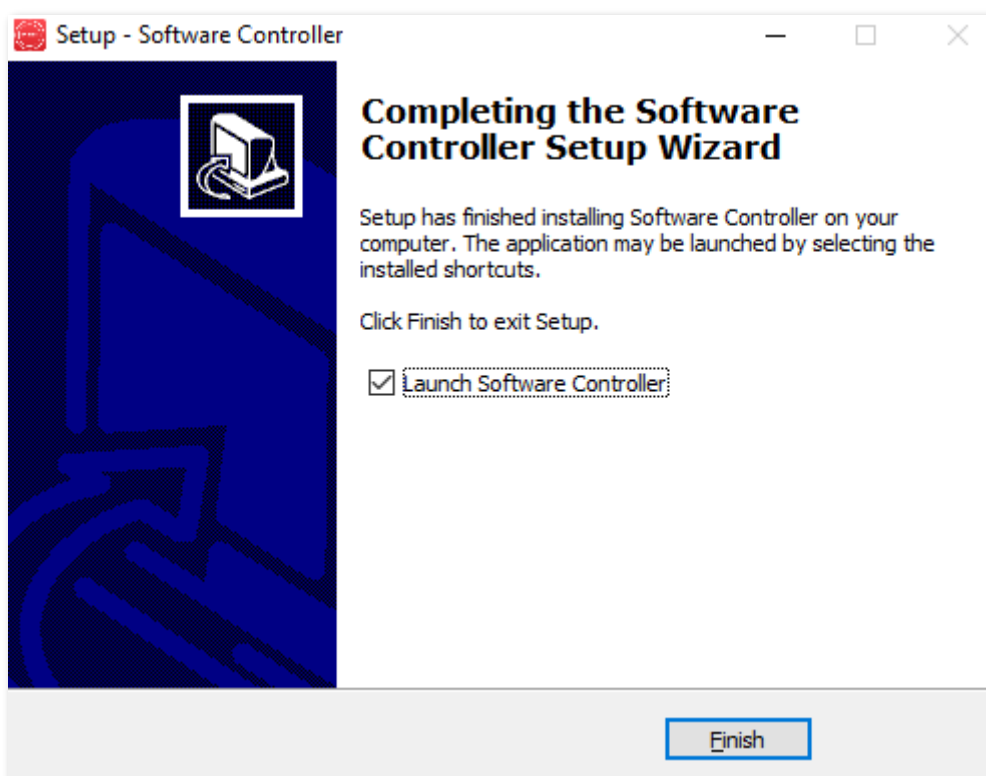
4. Customize an installation path as needed, and click **Next**.



5. Click **Install**.



6. Wait for the installation to complete and click **Finish**.



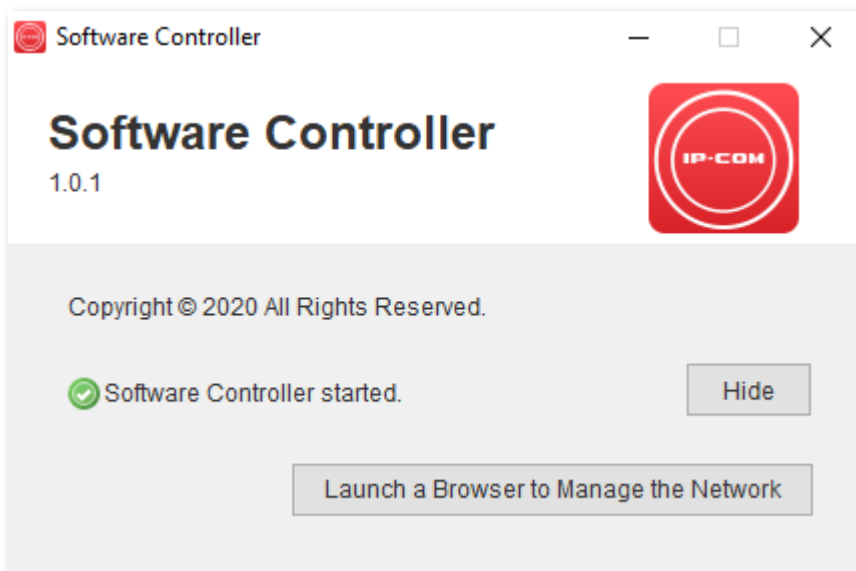
## II Configure Software Controller

You can log in to the Software Controller either using an IP-COM Cloud Network account (for both local access and [remote access](#)) or a local account (only for local access). Please choose a login type based on your actual scenario.

- If the computer installed with a Software Controller **has internet availability**, you can use both accounts, but [IP-COM Cloud Network account](#) is recommended.
- If the computer installed with a Software Controller **has no internet availability**, you can only use a [local account](#).

### Option A: Log in using an IP-COM Cloud Network account

1. Start the Software Controller and click **Launch a Browser to Manage the Network**.

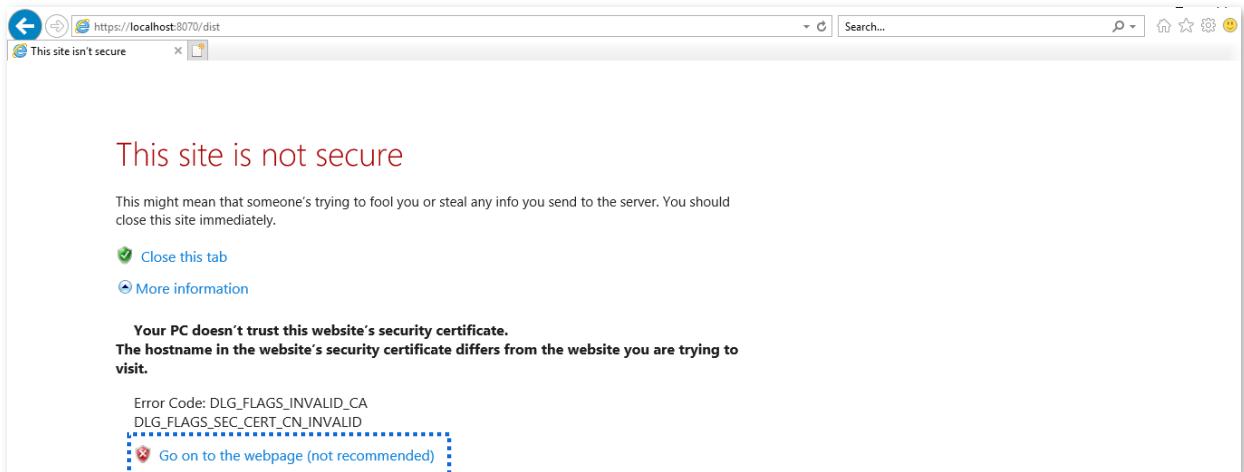


2. Click **More information > Go on to the webpage (not recommended)**. Internet Explorer is used here as an example.

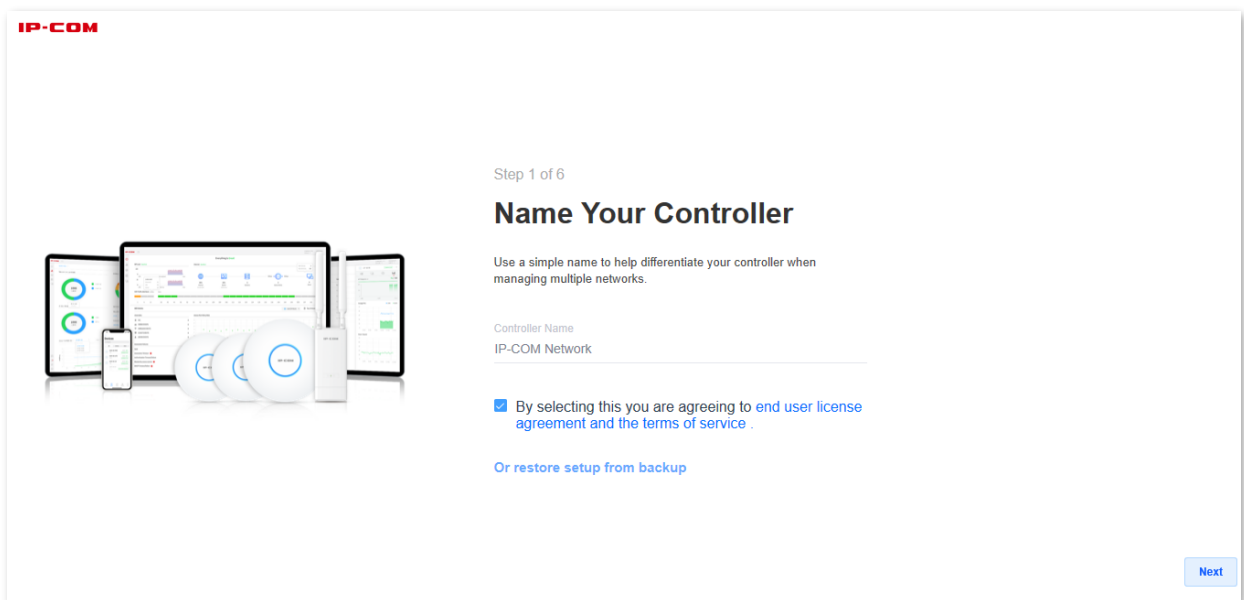


Software Controller supports HTTPS login. When you access its web UI, a prompt message indicating that the web address is not secure, for example, this site is not secure, may appear. Ignore the message and go on to visit the webpage.

---



3. Customize a Controller name as needed, check **By selecting this you are agreeing to end user license agreement and the terms of service**, and click **Next** in the lower right corner.



Alternatively, you can click **Or restore setup from backup** to use a file that contains your previous settings.

4. Enter your IP-COM Cloud Network username and password and click **Next** in the lower right corner.





If you do not have an IP-COM Cloud Network account, please register one by following the on-screen instructions. Only through an IP-COM Cloud Network account can you realize [Remote access](#).

IP-COM

Step 2 of 6

## Sign in with your Account

Use your Account to access your Controller or locally with the same credentials.

Username

Password

[Switch to Advanced Setup](#)

Not a member? [Create an IP-COM Cloud Network Account](#)

< Back

Next

5. Toggle off **Automatically optimize my network** and **Enable Auto Backup** as needed and click **Next** in the lower right corner.

IP-COM

Step 3 of 6 (Advanced)

## Network Setup

Basic configuration for your network.

Automatically optimize my network

Network automatically detects and sets the most commonly missed, but vital, settings for improved WiFi and network performance.

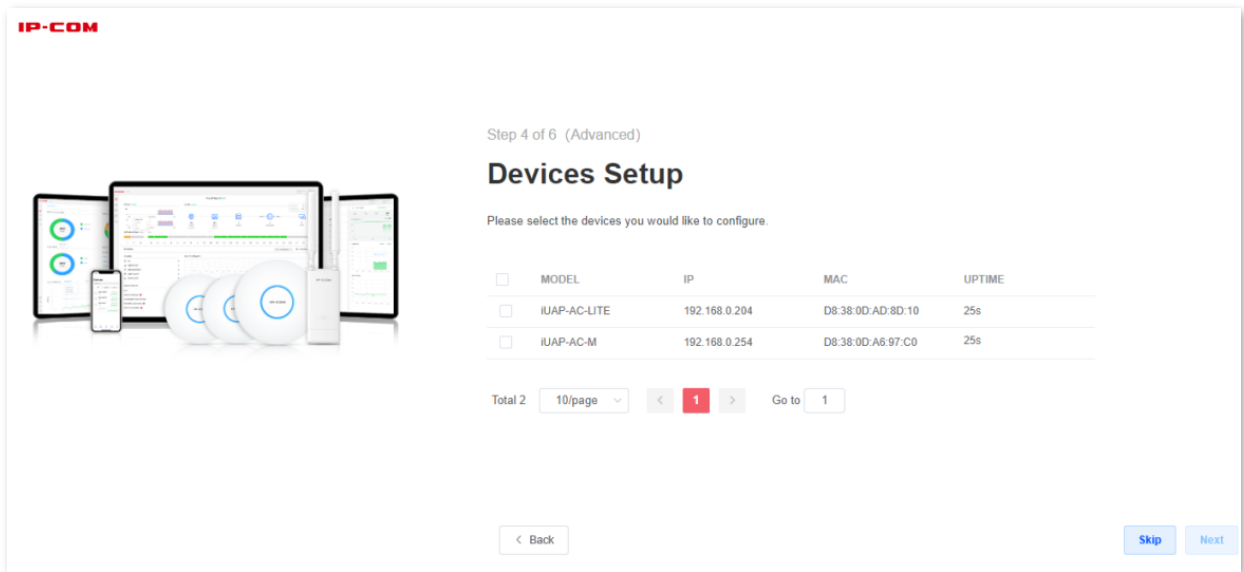
Enable Auto Backup

iUniFi Network will periodically do backups of your setup.

< Back

Next

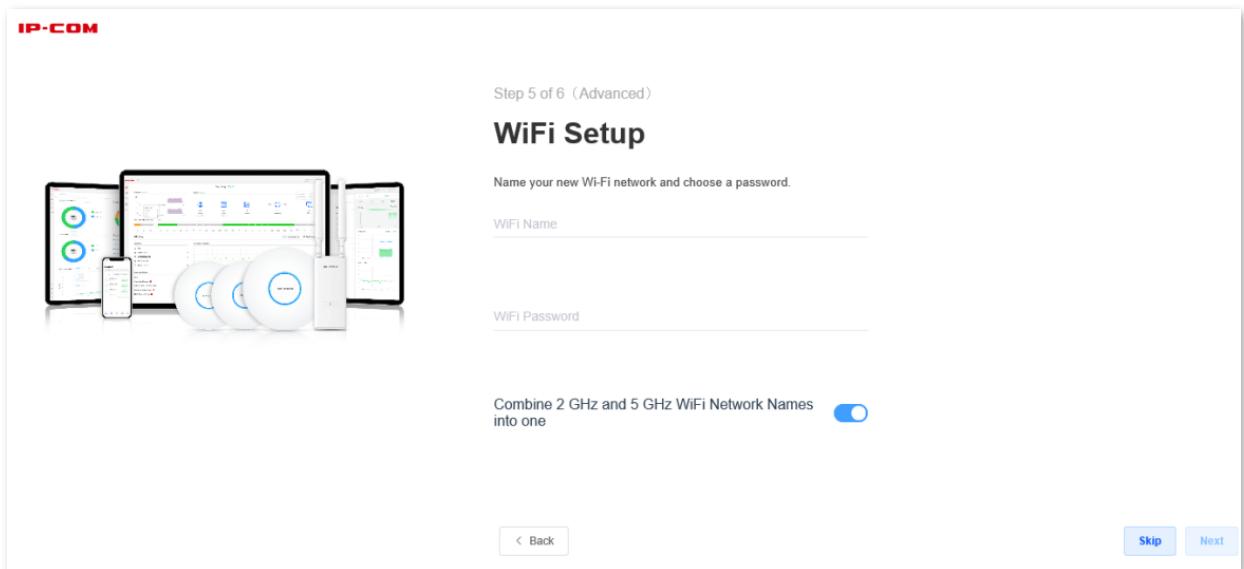
6. Wait until the iUAP series APs are displayed in the device list, select the APs you wish to adopt and click **Next** in the lower right corner.



Tip

If your APs do not appear in the list, refer to [Q1](#) in **FAQ**.

7. Set **WiFi Name** and **WiFi Password** for the primary WiFi network of the AP and click **Next** in the lower right corner.




8. Check your configurations, select **Country or territory** and **Timezone** and click **Finish**.

**IP-COM**

Step 6 of 6 (Advanced)

## Review Configuration

Check your configuration and setup your Controller.



Controller Name	IP-COM Network
Local Administrator Username	IP-COM
WiFi Name	IP-COM_1
Country or territory	China
Timezone	(GMT+08:00) Beijing, Chongqing,

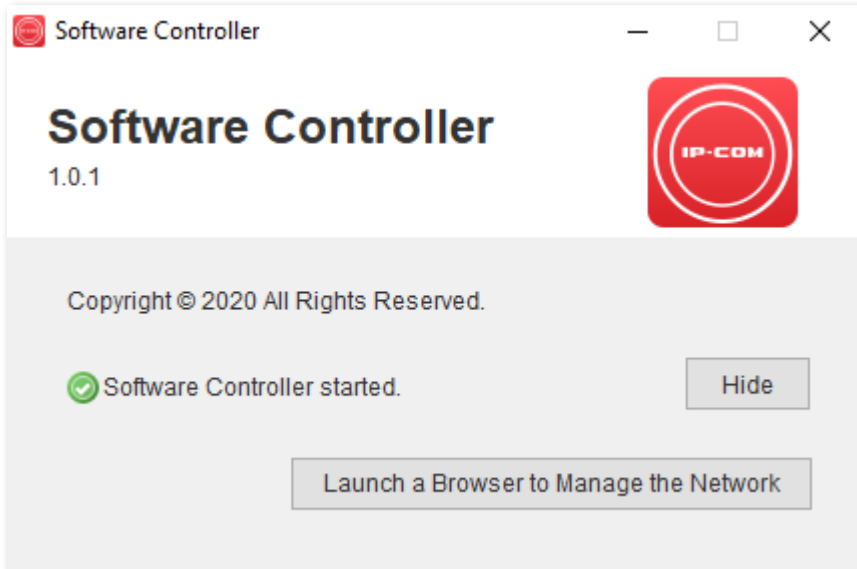
[← Back](#) [Finish](#)

**Done.**

If you want to perform more configurations, log in to the Software Controller again.

## Option B: Log in using a local account

1. Start the Software Controller and click **Launch a Browser to Manage the Network**.

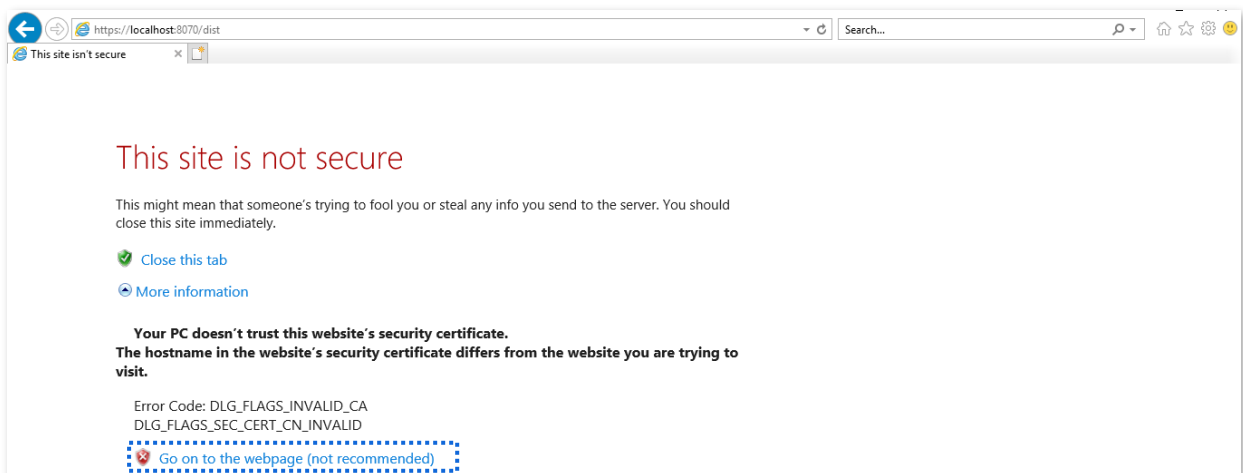


2. Click **More information > Go on to the webpage (not recommended)**. Internet Explorer is used here as an example.



Tip

Software Controller supports HTTPS login. When you access its web UI, a prompt message indicating that the web address is not secure, for example, this site is not secure, may appear. Ignore the message and go on to visit the webpage.



3. Customize a Controller name as needed, check **By selecting this you are agreeing to end user license agreement and the terms of service**, and click **Next** in the lower right corner.

**IP-COM**

Step 1 of 6

## Name Your Controller


Use a simple name to help differentiate your controller when managing multiple networks.

Controller Name  
IP-COM Network

By selecting this you are agreeing to [end user license agreement](#) and the [terms of service](#).

[Or restore setup from backup](#)

[Next](#)



Alternatively, you can click **Or restore setup from backup** to use a file that contains your previous settings.

4. Click **Switch to Advanced Setup**.

**IP-COM**

Step 2 of 6

## Sign in with your Account

Use your Account to access your Controller or locally with the same credentials.


Username

Password

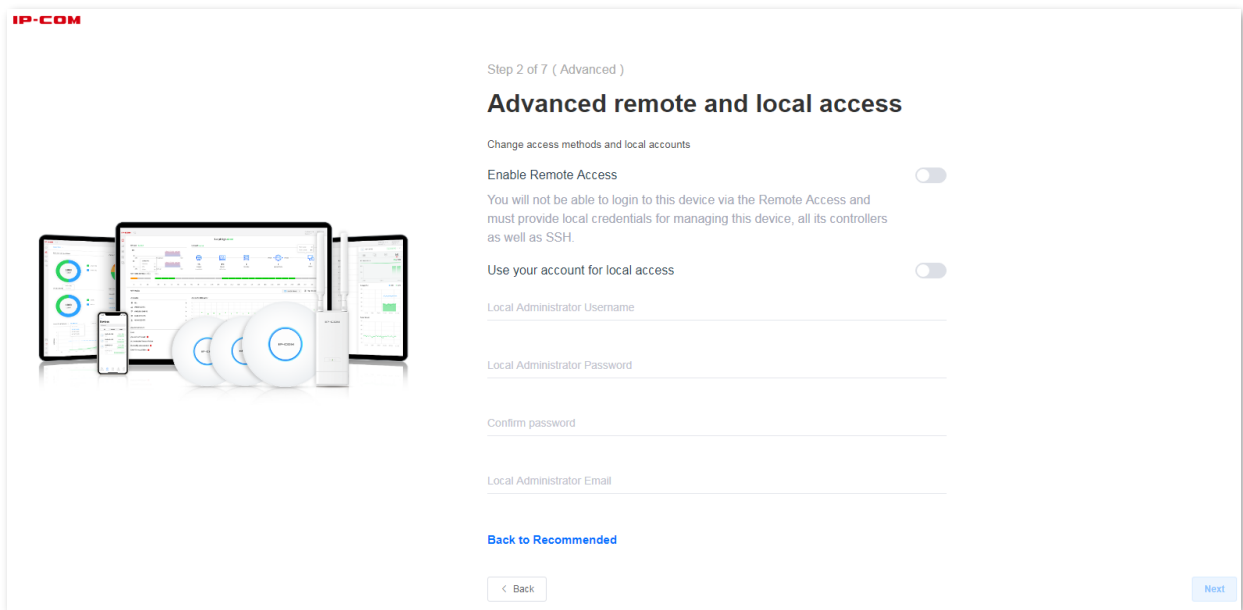
[Switch to Advanced Setup](#)

Not a member? [Create an IP-COM Cloud Network Account](#)

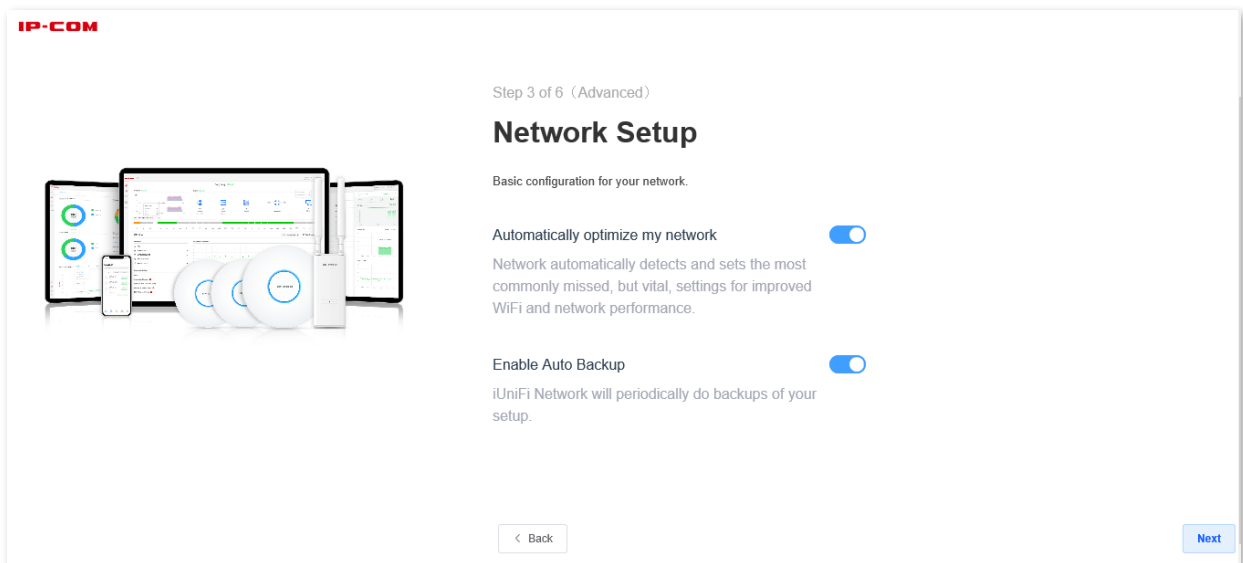
[Back](#) [Next](#)



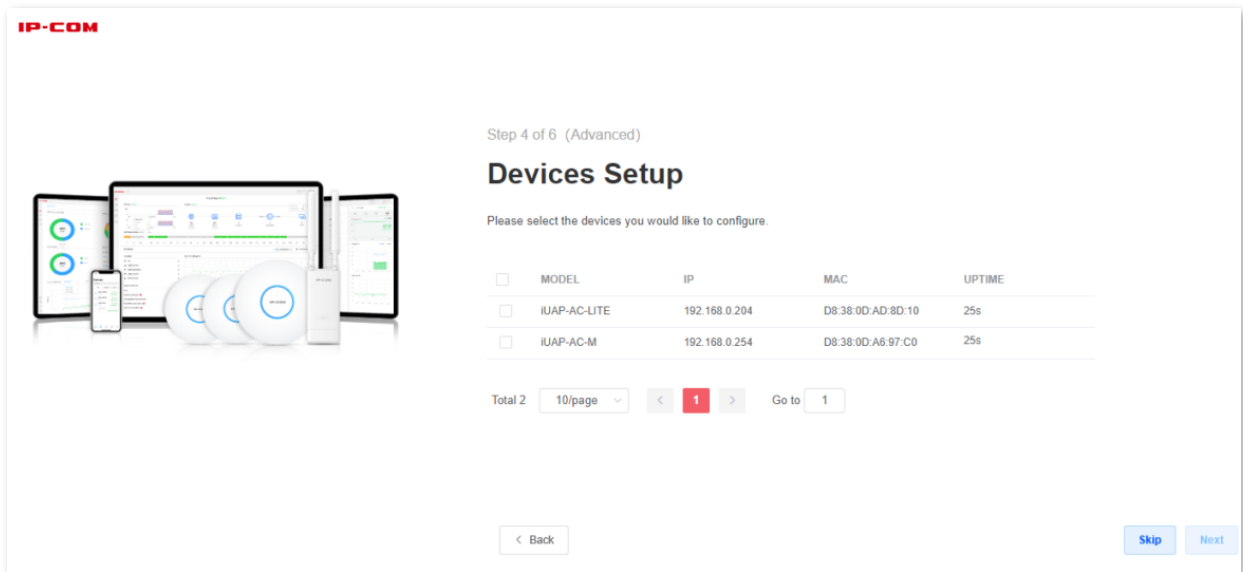
5. Toggle off **Enable Remote Access** and **Use your account for local access**, register an account by following the on-screen instructions, and click **Next** in the lower right corner.



6. Toggle off **Automatically optimize my network** and **Enable Auto Backup** as needed and click **Next** in the lower right corner.



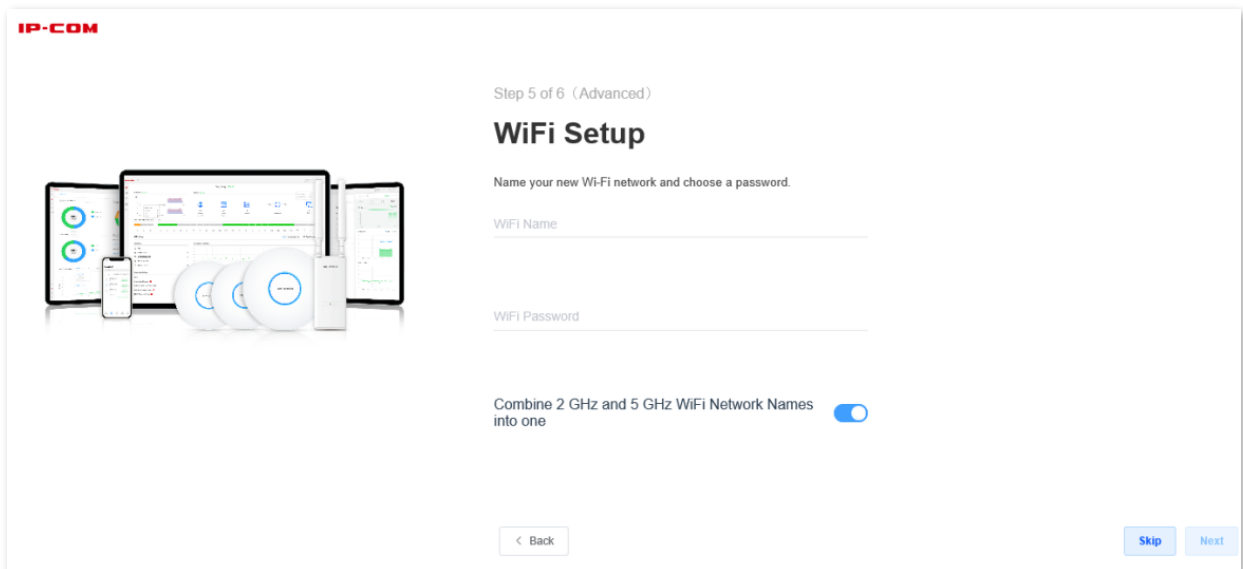
7. Wait until the iUAP series APs are displayed in the device list, select the APs you wish to adopt and click **Next** in the lower right corner.



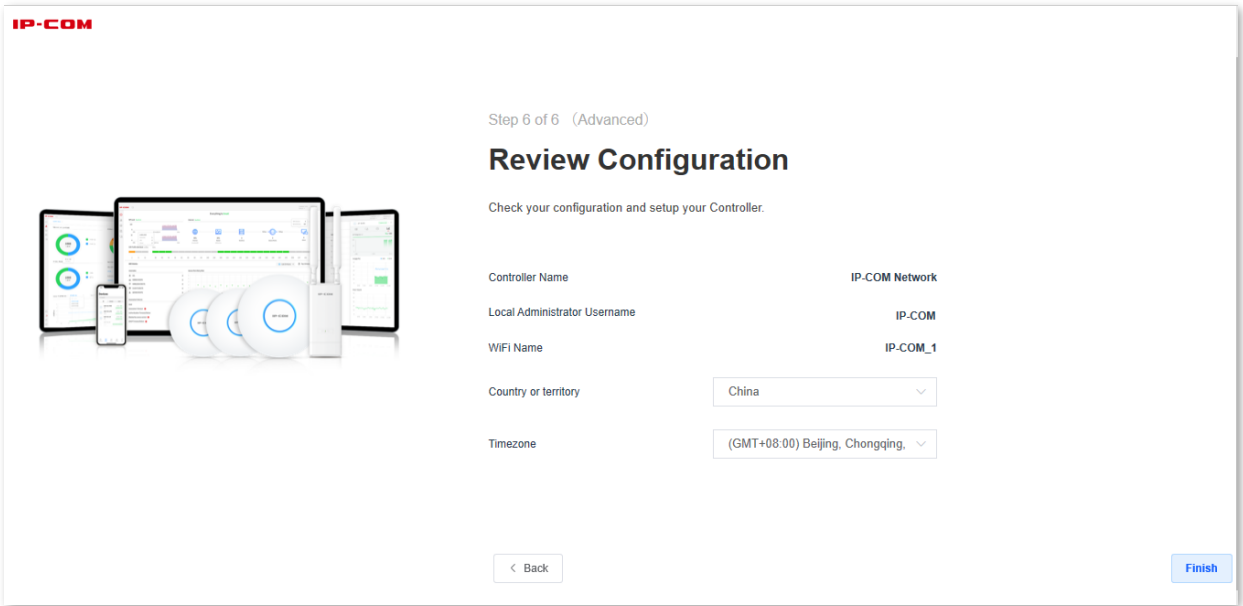
Tip

If your APs do not appear in the list, refer to [Q1](#) in **FAQ**.

- Set **WiFi Name** and **WiFi Password** for the primary WiFi network of the AP and click **Next** in the lower right corner.



- Check your configurations, select **Country or territory** and **Timezone** and click **Finish**.



**Done.**

If you want to perform more configurations, log in to the Software Controller again.



## Remote access

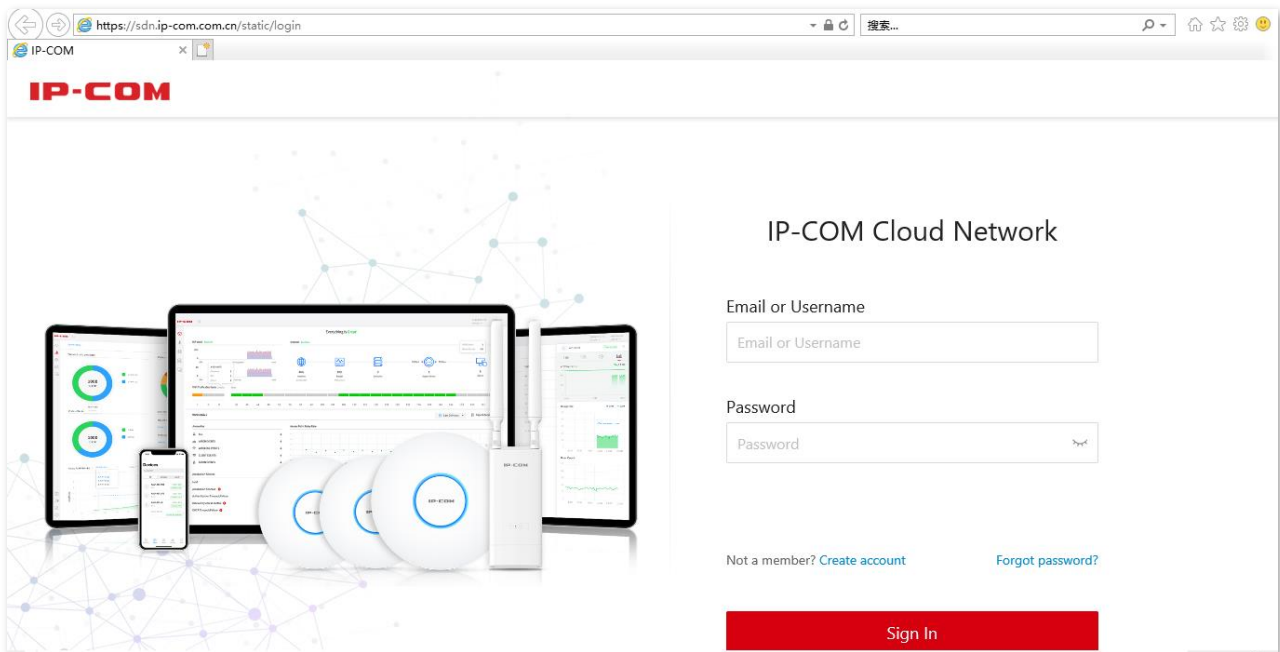
Only through an IP-COM Cloud Network account can you remotely manage your Software Controllers. If you do not have a cloud account, register one at [sdn.ip-com.com.cn](https://sdn.ip-com.com.cn)

### Scenario A: You have logged in using an IP-COM Cloud Network account

To achieve remote access:

On a computer that has connected to the internet, visit [sdn.ip-com.com.cn](https://sdn.ip-com.com.cn) and log in to IP-COM Cloud Network using your IP-COM Cloud Network account.

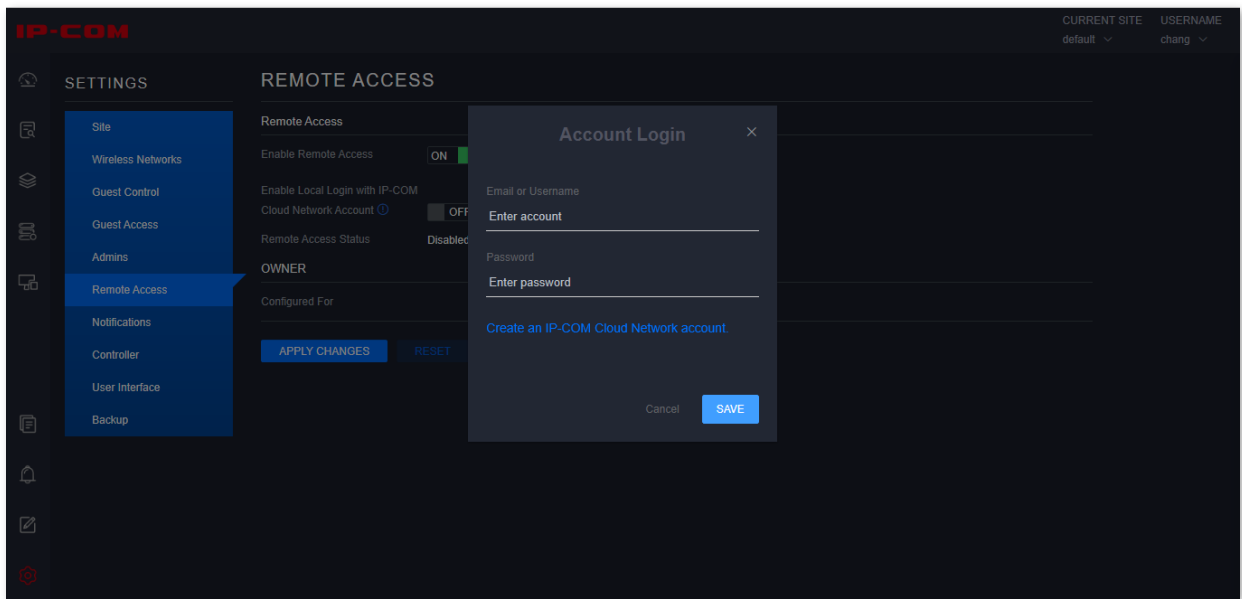
✔. You can remotely manage all the Software Controllers under this IP-COM Cloud Network account.



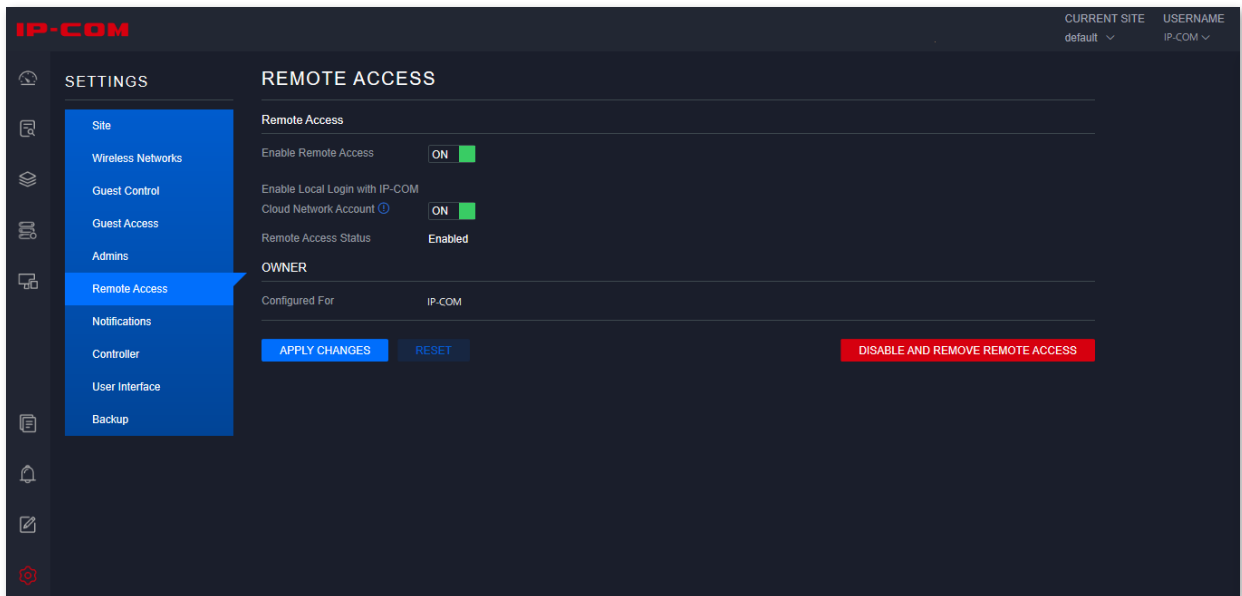
### Scenario B: You have logged in using a local account

To achieve remote access:

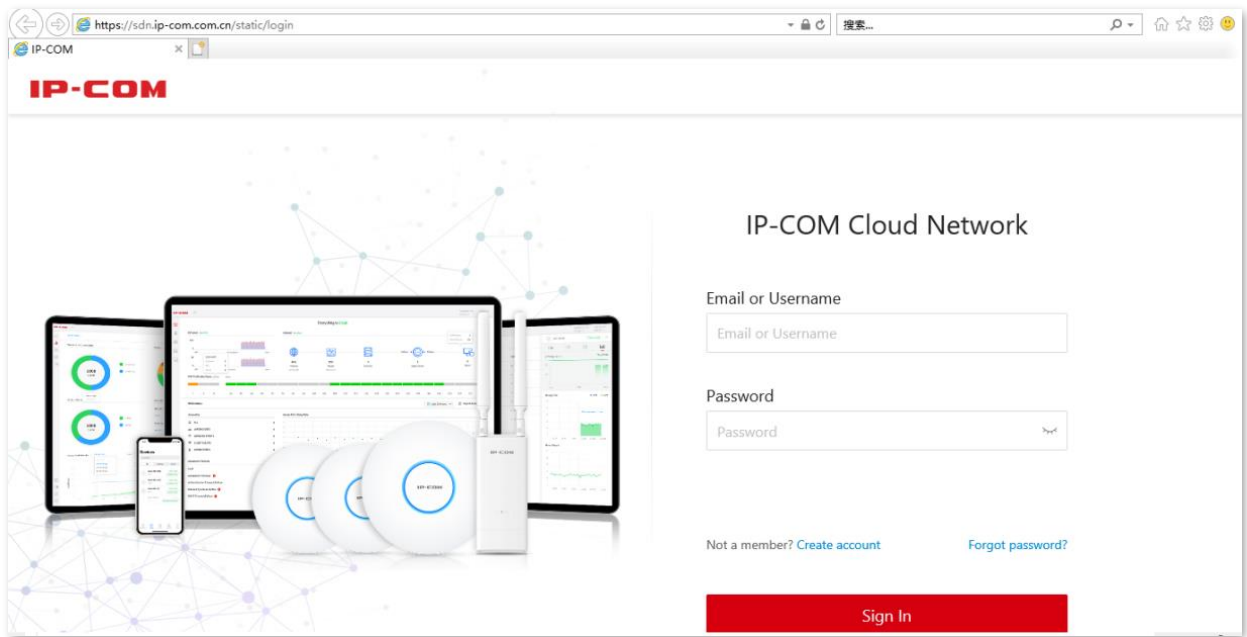
1. Go to **SETTINGS > Remote Access**, toggle on **Enable Remote Access**, enter IP-COM Cloud Network account and password, and click **SAVE**.



2. Toggle on **Enable Local Login with IP-COM Cloud Network Account** and click **APPLY CHANGES**.



3. Visit [sdn.ip-com.com.cn](https://sdn.ip-com.com.cn) and log in to IP-COM Cloud Network using your IP-COM Cloud Network account.



✔ You can remotely manage all the Software Controllers under this IP-COM Cloud Network account.

# FAQ

**Q1: My APs do not appear in the Devices Setup list. What should I do?**

A1: Try the following solutions:

- Verify that the IP address of your management computer and IP addresses of your APs are in the same network segment. For example, if the IP address of your AP is 192.168.0.254, then the IP address of your management computer should be 192.168.0.X (X ranges from 2 to 253 and is not occupied).
- Verify that your APs are in factory settings.

**Q2: My Software Controller fails to start up after an abnormal close. What should I do?**

A2: Restart your computer and try again.

**Q3: My browser prompts me that my Java version is out of date. What should I do?**

A3: Download the latest version of Java from Java download page.

**Q4: Can I start up multiple Software Controllers on my computer and log in with multiple accounts?**

A4: No. Only one Software Controller and one account are allowed at the same time on one computer.

Address: Room 101, Unit A, First Floor, Tower E3, NO.1001, Zhongshanyuan Road, Nanshan District, Shenzhen, China. 518052

Tel: (86755) 2765 3089

Email: [info@ip-com.com.cn](mailto:info@ip-com.com.cn)

Website: [www.ip-com.com.cn](http://www.ip-com.com.cn)